



**Happiness  
in the Rural  
Community,  
Together  
with KRC**



# Cultivating Happiness in Rural Community Together with KRC

## Cultivating Happiness in Rural Landscapes Sharing the Future of Agriculture and Fisheries

The Korea Rural Community Corporation (KRC) spearheads rural development as a specialist organization. We optimize the utilization and management of rural resources and enhance their value, thereby strengthening competitiveness in agriculture and fisheries. We also play a pioneering role in fostering economic, social, and environmental progress in rural areas. In pursuit of a happier life for our farmers and a brighter future for our Rural Community, KRC is here to co-create unprecedented value.

### CONTENTS



# Charting a Century of Progress Together



Happiness in the Rural Community,  
Together with KRC

Since our humble beginnings in 1908, we have spearheaded the establishment of a reliable foundation for safe food production, while simultaneously fostering the growth and prosperity of rural communities. As we stride forward into the future, our mission expands to include pioneering growth industries, ensuring sustainability, and forging a virtuous cycle. We are dedicated to maintaining and enhancing the vibrancy and well-being of our beloved rural communities.

1908

- The Birth of the Korea Rural Community Corporation
- Founding of the Okgu West Irrigation Association

1923

- Ensuring a Stable Supply of Water for Agriculture
- Completion of the Dae-ah Dam

1955

- Embarking on the Expansion of National Territory for Self-sufficiency in Food
- Commencement of Land Reclamation Works in the Gimpo Project

1968

- Boosting Agricultural Production through Land Reformation

1969

- Establishment of the Groundwater Development Corporation

1970

- Pioneering Modernization of Rural Communities
- Inception of the Agricultural Development Corporation

1979

- Advancing towards the Dream of Self-sufficient Food Production
- Completion of the Sappgyocheon Project

2022

- Unveiling the Mid- to Long-term Strategic Plan for Prosperous Rural Communities
- Launch of the Farmland Bank Management Service

2014

- Commencing a New Century of Transformation
- Moving into a new building in Naju, Korea

2010

- The Miracle of the 33.9 km Milestone
- Completion of the Saemangeum Seawall

2008

- Promoting Balanced Rural Development
- Launch of the Korea Rural Community Corporation

2005

- Signage Ceremony for the Korea Rural Community and Agriculture Corporation

2000

- Integration of three institutions (Farmland Improvement Association / Federation of Regional Farmland Improvement Association / Rural Development Corporation)
- Formation of the Korea Agricultural & Rural Infrastructure Corporation

1990

- Spearheading Improvements in Agricultural and Fishery Structures
- Inception of the Rural Development Corporation
- Advancing Agricultural Competitiveness and Broadening Income Sources
- Launch of the Farmland Bank Project





# Opening of a New Future for Rural Communities on the Path of Change

Greetings, valued clients,

In its 100-year history, Korea Rural Community Corporation has been striving for the happiness of farmers and fishermen, and a better future for rural communities.

Even now, we are leading the stable expansion of production mechanisms for staple grains and the improvement of the living environment in rural communities.

We are seeking direction for our agricultural and fishery industry in the midst of change.

In the future, KRC intends to diversify its role and continuously innovate to solve the pending agricultural issues in the period of a big change.

We will establish eco-friendly agricultural and fishing production fundamentals using digital technology and promote big data-based water management to meet various water demands in rural communities.

While strengthening farmland support centered on future agricultural manpower, we will recreate rural areas beyond the relaxation of the people as a space for sustainable value creation.

In addition, KRC would like to actively collect opinions from farmers and fishermen for job creation and safety in rural areas by establishing various communication channels.

We will reflect on the entire process of promoting the business.

KRC will always be with our customers so that our agriculture and fishing industry can overcome the current crisis and infuse the rural community with new hope.

Thank you.

**Lee Byung-ho**

President

Korea Rural Community Corporation



# Korea Rural Community Corporation will take the lead in the happiness of our farming and fishing communities

Happiness in the Rural Community,  
Together with KRC

At Korea Rural Community Corporation, we envision a future where land, water, people, and community coexist in harmony and prosperity. We're committed to making our rural communities, farmers, and fishermen feel secure, valued, and progressive through our efficient, safe, and innovative efforts.

## MISSION

To fortify the competitiveness of the agricultural and fishing industries and drive economic, social, and environmental advancements in rural communities. This is achieved through the efficient utilization and management of rural resources, coupled with the enhancement of their inherent value.

## VISION

Happiness in the Rural Community,  
Together with KRC

## CORE VALUES

Safety, Trust, and Innovation

### Strategic Goals:

- Consolidating a Robust Foundation for Food Sovereignty
- Ensuring Abundant Water Welfare
- Building a Customer-centric Farmland Platform
- Fostering Vibrant Rural Community Spaces
- Achieving Sustainable Management

### Strategic Task:

- Land**
  - Establishing a comprehensive safety infrastructure for agriculture and fisheries.
  - Transforming the production system in response to food crises.
  - Expanding overseas bases for K-Agriculture.
- Water**
  - Deploying digital-based water management.
  - Ensuring agricultural water safety.
  - Leading the charge towards carbon reduction in rural communities.
- People**
  - Cultivating the next generation of farmers.
  - Establishing a reliable income safety net for farmers.
  - Reinforcing close-knit farmland management.
- Rural Community**
  - Building desirable rural communities.
  - Spearheading economic development in rural communities.
  - Stimulating local communities.
- New**
  - Driving management innovation for efficiency enhancement.
  - Implementing a co-creative public empathy management approach.
  - Fulfilling our social responsibilities.





**We safeguard land and water,  
empower people, and uplift  
rural communities.**

**We strive to cultivate the future  
potential of farming and  
fishing communities.**

As a comprehensive management organization dedicated to the sustainability of rural communities, the Korea Rural Community Corporation (KRC) proactively pursues initiatives across various sectors (land, water, people, rural community) to amplify the value of these communities, fostering a rural environment where people aspire to live.

**[ Land ] Agricultural Production Base Maintenance Project**

We strive to establish a secure foundation for efficient agricultural production.

**Direction of Propulsion** • Rice —> Our emphasis is on multi-crop cultivation and the creation of platforms for overseas expansion to strengthen food sovereignty.

**[ Water ] Rural Water Management Project**

We ensure the timely and precise provision of water, crucial for efficient agricultural production.

**Direction of Propulsion** • We are dedicated to guaranteeing a stable water supply by designing customized response systems that cater to regional specificities.

**[ People ] Farmland Banking Initiative**

We aim to cultivate professional agricultural personnel to bolster the competitiveness of agricultural production.

**Direction of Propulsion** • We aspire to evolve into a business that meets the emerging generation's demands for rural areas.

**[ Rural Community ] Rural Community Vitality Promotion Project**

We are committed to expanding fundamental facilities for settlement in rural communities and increasing the income of farmers and fishermen.

**Direction of Propulsion** • We aim to enhance the quality of life through local-specific projects aimed at restructuring rural areas.



## We create a Vibrant Future by Elevating the Value of Rural Community

The Korea Rural Community Corporation (KRC) nurtures the present while envisioning the future of the rural community. Our initiatives span a multitude of fields, from maintaining agricultural production infrastructure and managing water resources to operating farmland banks and promoting vitality in rural communities.



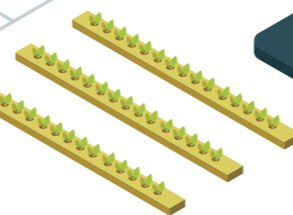
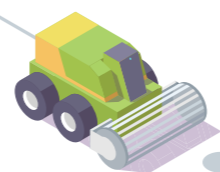
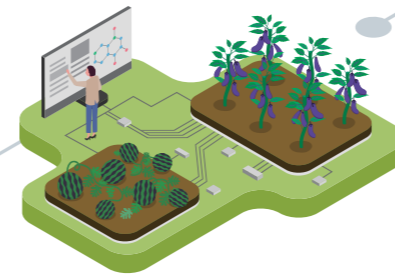
### [ Rural Community ] Agricultural and Fishing Village Vitality Promotion Project

- **Agricultural and Fishing Village Development:** We maintain and develop rural community populations through thoughtful planning and development.
- **Enhancing the Vitality of the Fishing Community:** We fortify continuity and dynamism through the innovation of fishing village spaces.
- **Support for the Revitalization of Rural Communities and the Convergence Industry:** We stimulate the convergence of the 1st to 3rd industry sectors in rural areas.
- **Improvement of Living Conditions in Vulnerable Areas:** We strive to enhance living conditions in vulnerable areas by expanding the living infrastructure.



### [ People ] Farmland Bank Initiative

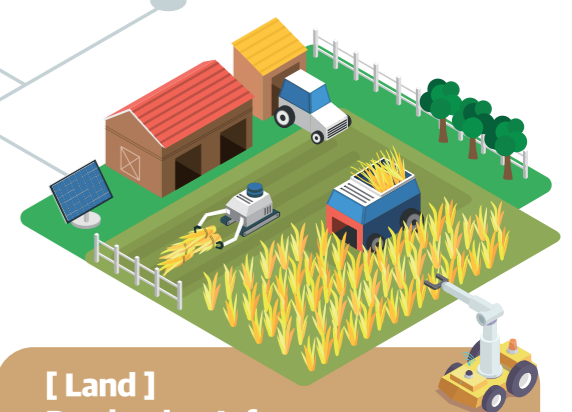
- **Customized Farmland Support:** We provide support at each growth stage for young farmers and others entering the field.
- **Farmland Lease Consignment:** We consign leased farmland to full-time farmers and similar stakeholders.
- **Enlarging Orchard Size:** We enhance the competitiveness of orchard farming through the sale and leasing of orchards.
- **Business Recovery Support:** We extend assistance to farming households in crisis, aiding their return to normal operations.
- **Farmland Pension:** Farmers can use their farmland as collateral to secure funds for living expenses.



Korea Rural Community Corporation

### [ Water ] Rural Water Management Initiative

- **Facility Operation and Maintenance:** We handle the upkeep and management of agricultural water supply infrastructure.
- **Facility Renovation:** We prevent disasters by repairing and reinforcing aging water supply facilities.
- **Investigation and Improvement of Agricultural Water Quality:** We ensure the provision of eco-friendly agricultural water by examining and improving the quality of water sources.
- **Groundwater Resource Management in rural communities:** We advocate for stable groundwater supply through surveys in rural regions.
- **Automation of Agricultural Water Management:** We automate and remotely control water management in agricultural infrastructure.
- **Renewable Energy Development Project:** We foster the development of renewable energy utilizing existing agricultural infrastructure.



### [ Land ] Production Infrastructure Maintenance Initiative

- **Development of Multi-Purpose Rural Water Resources:** We secure water resources by installing irrigation facilities like reservoirs.
- **Drainage Improvement:** We prevent flood damage by installing drainage facilities on farmland.
- **Large-Scale Agricultural Development:** We promote water development and similar initiatives centered on large-scale river water systems.
- **Overseas Development Project:** We provide consultation for the development of overseas farming and fishing regions.
- **Creation of a Smart Farm Innovation Valley:** We facilitate the integration of high-tech agriculture that combines smart farms, youth entrepreneurship, and technology.







MAJOR PROJECTS

## **Safeguarding the Nation's Food Supply Strengthening a Robust Foundation for Food Sovereignty**

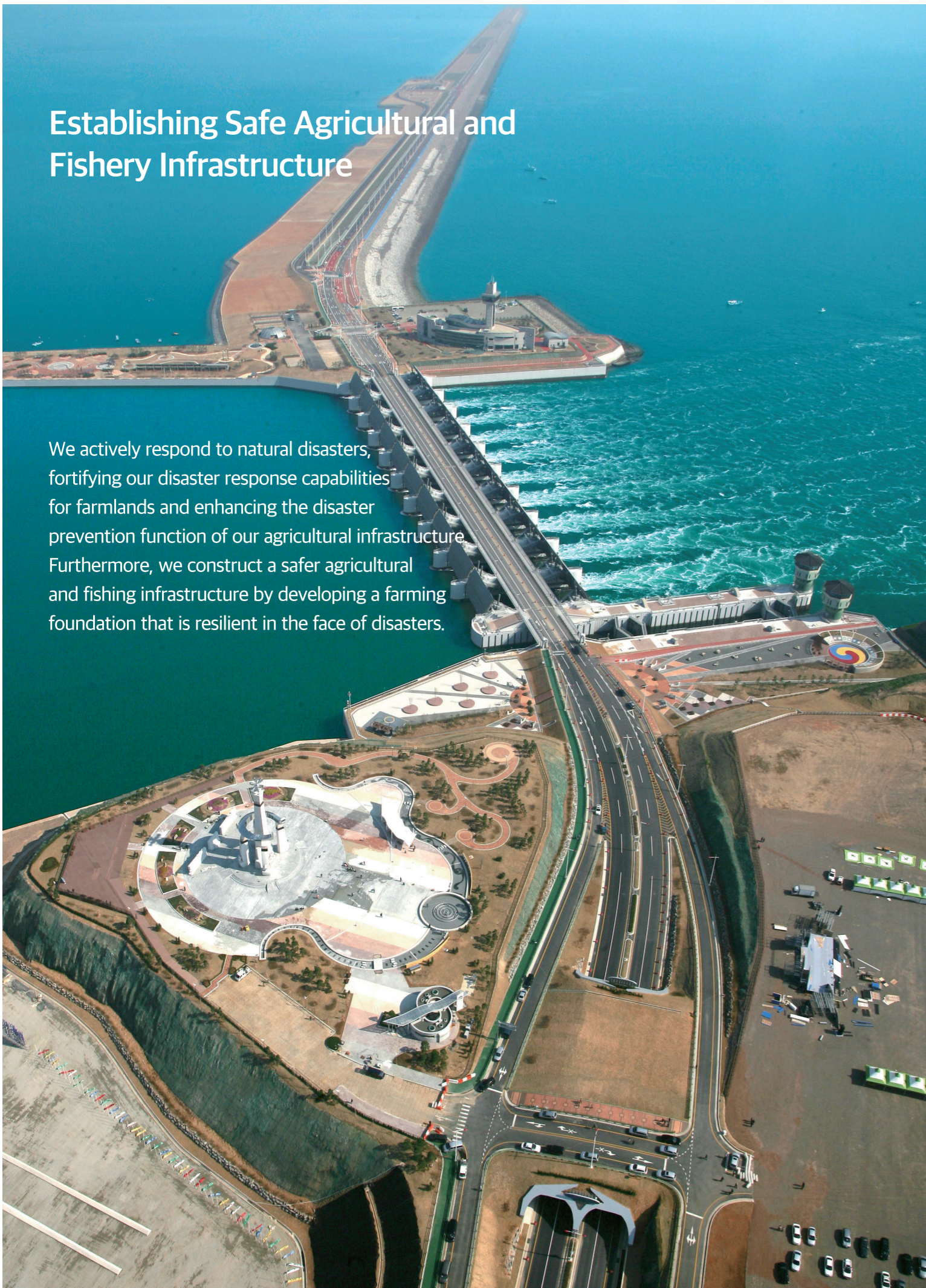
The Korea Rural Community Corporation (KRC) is at the forefront of expanding the nation's agricultural boundaries, leveraging world-class farming technology to create superior farmland and support the production of safe food for the people. In response to the swiftly changing agricultural landscape, we utilize farmland effectively, striving to create prosperous rural communities by enhancing their competitiveness.

1



## Establishing Safe Agricultural and Fishery Infrastructure

We actively respond to natural disasters, fortifying our disaster response capabilities for farmlands and enhancing the disaster prevention function of our agricultural infrastructure. Furthermore, we construct a safer agricultural and fishing infrastructure by developing a farming foundation that is resilient in the face of disasters.



### Establishing a Safe Farming Foundation in Response to Natural Disasters

- Enhancing Farmland Disaster Response Capabilities.
  - We preemptively prevent natural disasters such as drought and flooding to bolster our farmland disaster response.
  - We diversify water sources through new water resource development and system reorganization projects, thus enabling efficient distribution and utilization of water resources.
  - Through drainage improvement projects, we prevent the habitual flooding of farmland.
- Advanced Safety Management.
  - We reinforce safety management in advance by expanding and refining the establishment of an Emergency Action Plan (EAP).
  - We provide public safety services, including agricultural infrastructure safety management, free inspections, and education.
- Climate Crisis Response.
  - We establish and implement KRC's climate crisis response measures.

### Creation of a Large-scale Agricultural Production Base

- Comprehensive Development of Saemangeum.
  - Following the completion of the 33.9km-long Saemangeum embankment — created with pure Korean technology — we are developing the Saemangeum Agricultural Life Site as a base for nurturing high-tech agricultural industries. This includes complex grain complexes, specialized agricultural complexes, and horticultural complexes to enhance agricultural competitiveness.
- Large-scale Agricultural Development.
  - We are generalizing reclaimed land through the development of large-scale reclamation projects such as Hwaong, Sihwa, and Yeongsan Rivers and comprehensively reorganizing agricultural production bases such as water development and drainage improvement. This work helps create a safe farming environment protected from drought and flooding while also improving agricultural productivity.



# Transforming the Production System in Response to the Food Crisis



We are enhancing food security by establishing a production base for customized composite crops to expand the production of various extra-income crops like wheat and soybeans, and by building smart infrastructure leveraging Fourth Industrial Revolution technology.



## Creating Conditions for Multi-crop Cultivation to Boost Food Self-sufficiency

- We are laying the groundwork to secure food sovereignty by expanding the farming base for strategic crops like soybeans and wheat.
- We are establishing production bases, including water supply, drainage, and cultivation roads, to nurture and support fruit production bases.

## Expanding Smart Agriculture to Enhance Crop Productivity

- We support the construction of new smart farm greenhouses that manage the growth environment remotely and automatically by applying Information and Communication Technology (ICT) to vegetable and flower farms. This ensures a stable production and supply base for high-value-added agricultural products, as well as a low-carbon agricultural foundation.



# Broadening the Global Reach of K-Agriculture



Our goal is to project and position the success story of K-Agriculture on the global stage through the export of our home-grown agro-industrial technology. We're also laying a solid foundation for future overseas food security by enhancing our support for private companies venturing into overseas agricultural development and innovation.

## Propelling the Reach of K-Agriculture Technology Internationally

- By leveraging public-private partnerships in agro-industry, we're securing large-scale overseas SOC projects and paving the way for shared growth.
- We offer an array of technical services overseas, including multi-purpose dam construction, modernization of irrigation facilities, and underground water development.
- We're committed to promoting customized Official Development Assistance (ODA) for partner countries, with a focus on grant aid.
- We're actively participating in international efforts to nurture agriculture and rural development in developing countries and to eliminate poverty and hunger.
- Our goal is to evolve into a specialist institution for international cooperation in agriculture and fisheries, exploring and endorsing convergent and complex ODA business models.

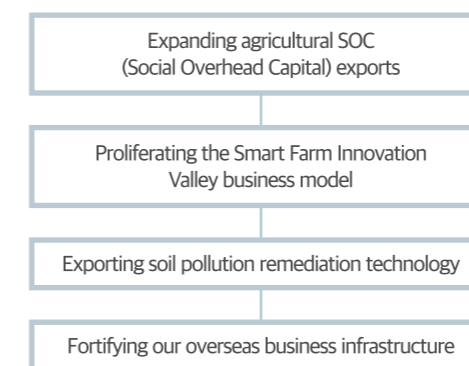
## Supporting Companies Venturing Overseas in the Agri-Food Sector

- We extend our support to private companies in the agricultural sector, aiding their overseas expansion.
- We aim to broaden the base of the agri-food industry by assisting the private sector in establishing its presence in the overseas agri-food industry.
- ※ We provide financial support, engage in B2B agricultural business dialogues, operate the Russian farming support center, and offer overseas demonstration test support.

## Setting the Stage for Export Expansion

- We're focused on establishing a cooperative system within the K-Agricultural Technology Export Promotion Team.
- We're committed to laying a platform for shared growth between the public and private sectors.

### Manifesting Global KRC Vision







MAJOR PROJECTS

## Delivering Abundant Water Welfare through Stable Water Supply

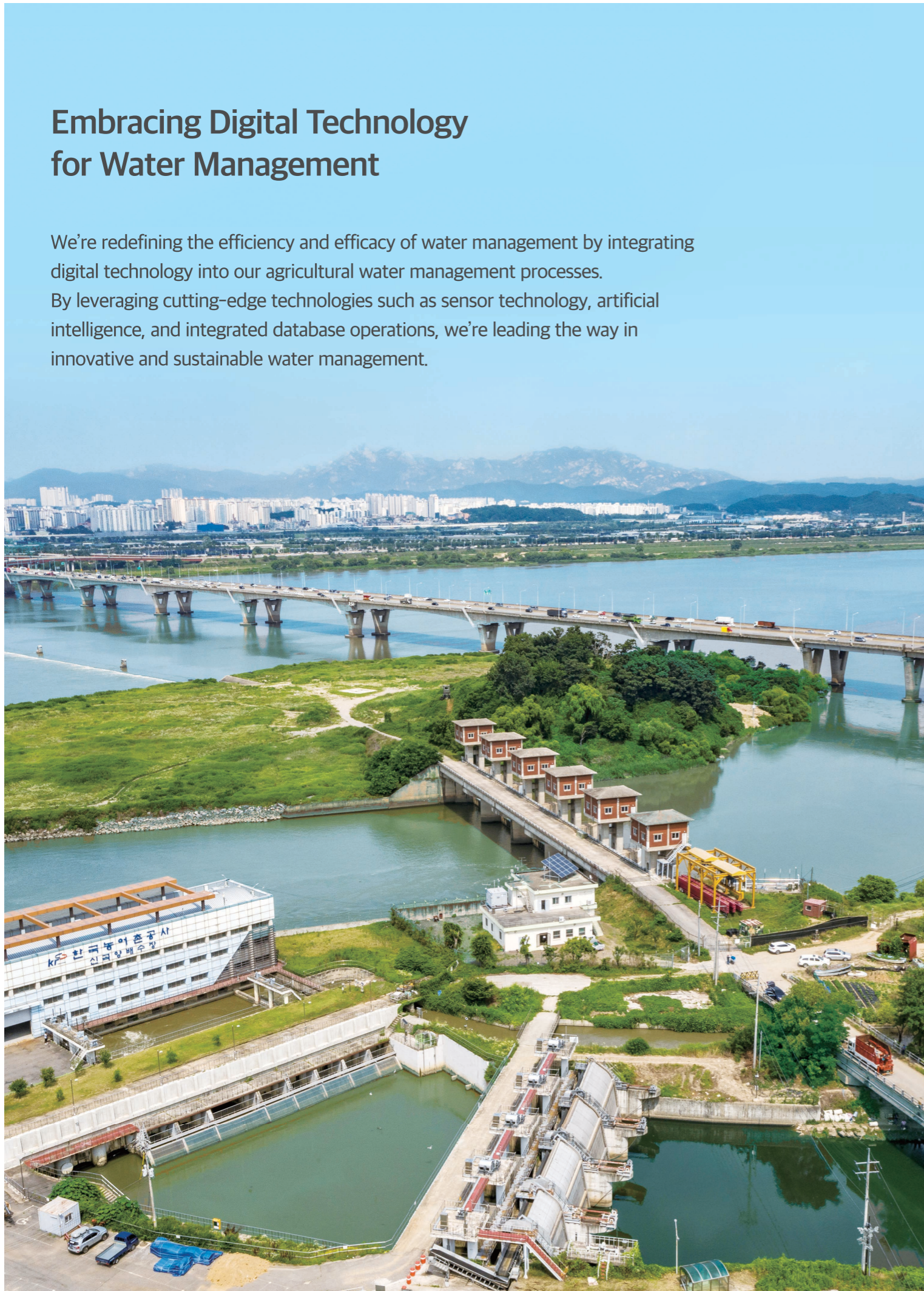
At the Korea Rural Community Corporation, we're committed to providing pristine, safe water to our rural communities. Our approach harnesses the power of digital technology for precise water quantity and quality management, giving our public peace of mind while supporting the competitive edge of our farmers and fishermen. We also take pride in our water welfare services, such as energy development using unused sites and facilities. Our commitment to disaster preparedness and safety-first inspections ensures resilience in the face of adversity.

2



# Embracing Digital Technology for Water Management

We're redefining the efficiency and efficacy of water management by integrating digital technology into our agricultural water management processes. By leveraging cutting-edge technologies such as sensor technology, artificial intelligence, and integrated database operations, we're leading the way in innovative and sustainable water management.



## Laying the Cornerstone for Intelligent Water Management

- We're building a scientifically grounded water management system through the digital revolution in our agricultural infrastructure. This includes extending our reach with remote monitoring and control.
- Our automated water management systems (TM/TC) ensure a fair distribution and reduction of agricultural water use.
  - ※ TM (Tele-metering) and TC (Tele-Control) refer to our telemetry and remote control systems respectively.
- We're enhancing information provision to our consumers (farmers), bolstering agricultural safety, promoting water welfare, and harnessing the power of information resources.
- We operate a cutting-edge water resource management system to analyze and predict crucial data such as water retention rates and precipitation, enabling us to provide relevant information to our consumers.

## Building an ICT-Driven Measurement System

- We're guaranteeing the stability of our water supply through the deployment of automatic meters and sophisticated big data analytics.
- We're bolstering our emergency response system to prepare for earthquakes and other disasters with our advanced disaster prevention measurement systems.



## Reinforcing R&D in Water Management Technology

- We're establishing a data-driven supply and demand analysis system and pioneering methods for disaster prediction and reservoir collapse prevention.
- We're championing research in water management technology, including the development of next-generation smart water management applications (SWMAS).





## Guaranteeing Water Safety in Rural Communities

We diligently implement water quality management and enhancement initiatives to ensure the timely delivery of high-quality water. Furthermore, we aim to provide clean water at the ideal time and in the perfect quantity by broadening the usage of groundwater. Our strategies also include upgrading and enhancing facilities that are aging, damaged, or inadequate in flood control capabilities, to promote steady water supplies and prevent disasters.



25

Happiness in the Rural Community,  
Together with KRC

## Pioneering Carbon Reduction in Rural Community

We are at the forefront of carbon reduction initiatives in rural communities. We leverage idle resources, such as water surfaces and land, to promote renewable energy, establish power plants involving farmer and fisher participation, and distribute energy-efficient facilities.



### Reliable Agricultural Water Supply

- We develop proactive measures to secure water through an agricultural drought management system and harness pumped water storage and riverbed excavation to ensure water availability.
- We enlarge the establishment of large-capacity groundwater-securing facilities via groundwater dams and groundwater recharge projects.

### Securing Agricultural Infrastructure Safety

- We ensure the substantial performance improvement of deteriorating and damaged water source facilities, including reservoirs, pumps, drainage systems, and intake weirs.
- Our efforts include enhancing flood control abilities via preemptive discharge and efficient irrigation, facilitated by the installation of reservoir water level control devices.
- We are committed to promoting seismic reinforcement work for reservoirs that are obliged to adhere to seismic design standards (over 300,000 tons).

### Establishing a Clean Water Supply Base

- We work towards the establishment of a safe water quality foundation through continuous water quality investigation, enhancement, and management.
- We aim for customized water supply through real-time water quality measurement and the expansion of water quality improvement projects.
- In collaboration with local communities, we plan and support water quality and environmental conservation initiatives, such as agricultural environment conservation programs.



### Utilization of Agricultural Infrastructure and Idle Land for Renewable Energy Development

- By using agricultural infrastructure to generate renewable energy we contribute to greenhouse gas reduction.
- We protect prime farmland and forest resources by utilizing agricultural infrastructure for renewable energy development, which also helps prevent reckless exploitation of these lands.
- The profits garnered from community participation and renewable energy projects amplify public value, creating benefits for farmers and local communities, such as through improvements in agricultural infrastructure.



### Promoting Energy-Efficient, Low-Carbon Facilities

- We alleviate energy cost burdens for farmers and fishermen by distributing heating and cooling systems that utilize geothermal energy, waste heat, and seawater heat.
- We diversify our initiatives to include efficient agricultural energy usage, provision of eco-friendly energy supplies, and the introduction of energy-saving facilities in the fish processing sector.





## MAJOR PROJECTS

### **Creating a Customer-Centric Farmland Platform: Fueling the Hopes of the Youth, the Joy of the Elderly, and the Future of Agriculture**

The Korea Rural Community Corporation, a comprehensive farmland management organization, is dedicated to establishing a robust social safety net for farmers and fishermen while fostering competitive farming practices. Our initiatives are designed to enhance farmland utilization and provide new opportunities filled with hope to our farmers. This includes extensive farmland surveying, analysis, and the implementation of farmland support projects customized to every stage of life.



## Empowering Young Farmers Through Tailored Farmland Support

Our Farmland Bank is committed to nurturing the growth of our future farmers. We aim to attract new talent, ensure stable settlement, and facilitate systematic growth. Through our tailored farmland support, we cater to various life stages such as interest, start-up, growth, crisis, and retirement, to meet the demands of young farmers in their 20s and 30s.



### Tailored Farmland Support Solutions

- **Farmland Sales, Rentals, Leases, Exchanges, and Adjustments**

- At the Korea Rural Community Corporation, we offer a wide range of farmland support services to suit the unique needs of each farmer.

- **Farmland Sales:**

- We purchase farmland from non-farmers, relocating farmers, and retired or aging farmers, which we then sell to young farmers, offering purchase fund support.

- **Rentals and Leases:**

- We lease farmland from those who have inherited or transferred farming land, and retired or aging farmers, which is then leased to young farmers.

- **Exchange and Adjustment:**

- We offer subsidies for replotting settlements due to differences in exchange and adjustment, and we also incorporate Production Base Maintenance Projects with this program.

- **Purchase of Farmland for Public Lease**

- We also buy farmland for public lease through our Farmland Bank. This farmland is reserved for the elderly, retired, or inherited farmland owners and is preferentially leased to young farmers including start-ups and individuals in their 20s and 30s.

### Farmland Lease Consignment

- Our corporation offers a unique farmland lease consignment service for non-cultivated farmland, leasing it to a farmer after being entrusted to us.





## Establishing a Safety Net for Farmer Income

We are committed to creating a social safety net for economically vulnerable farms, such as those struggling with debt and aging farmers.



### Farmland Pension

- To ensure the livelihood of elderly farmers, we provide monthly payments akin to a pension, using the farmland owned by these farmers as collateral. This service aims to stabilize the retirement lives of our aged farmers.

| Division                                 | Payment method                  | Detail   |
|--|---------------------------------|--|
| Lifelong Options                         | Lifetime fixed-rate             | Provides a fixed monthly payment for life.   |
|  | More Initially, Less Thereafter | Offers a higher payment than the fixed amount for the first 10 years, with a reduced payment thereafter.                             |
|  | Occasional Withdrawal           | Allows the pension holder to withdraw money at any time up to 30% of the total payment.  |
| Fixed-term Options (5, 10, 15, 20 years) | Fixed Amount for Fixed-term     | Provides a monthly payment of a fixed amount for the period chosen by the subscriber.  |
|  | Management Transfer             | After the payment period ends, the corporation agrees to purchase the farmland and pays a greater amount than the fixed-rate method. |

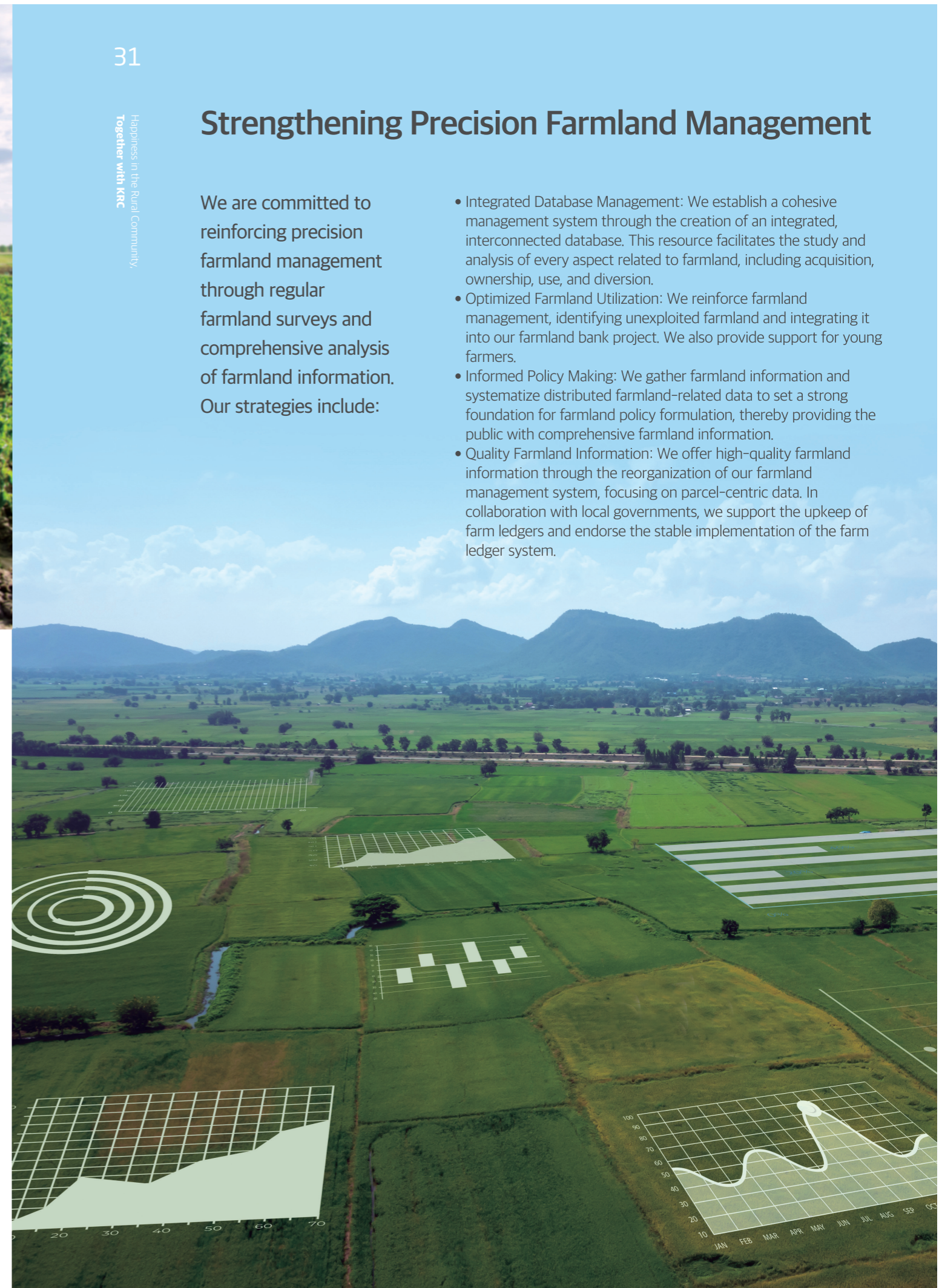
### Business Rehabilitation Through Farmland Purchase Programs

- At Korea Rural Community Corporation, we provide support for farmhouses temporarily affected by business crises due to debt or natural disasters. We purchase farmland from these establishments, using the sales proceeds to assist in repaying their debts, thereby facilitating business normalization. We also offer a long-term lease (7-10 years) on the purchased farmland, guaranteeing the right to repurchase it after the lease term.

## Strengthening Precision Farmland Management

We are committed to reinforcing precision farmland management through regular farmland surveys and comprehensive analysis of farmland information. Our strategies include:

- Integrated Database Management:** We establish a cohesive management system through the creation of an integrated, interconnected database. This resource facilitates the study and analysis of every aspect related to farmland, including acquisition, ownership, use, and diversion.
- Optimized Farmland Utilization:** We reinforce farmland management, identifying unexploited farmland and integrating it into our farmland bank project. We also provide support for young farmers.
- Informed Policy Making:** We gather farmland information and systematize distributed farmland-related data to set a strong foundation for farmland policy formulation, thereby providing the public with comprehensive farmland information.
- Quality Farmland Information:** We offer high-quality farmland information through the reorganization of our farmland management system, focusing on parcel-centric data. In collaboration with local governments, we support the upkeep of farm ledgers and endorse the stable implementation of the farm ledger system.







## MAJOR PROJECTS

### Elevating Life Quality to Foster Vibrant Rural community

At Korea Rural Community Corporation, we are reshaping rural community to become more appealing, leading initiatives focused on economic, social, and environmental advancements. Our approach involves the reconfiguration of rural spaces, invigorating communities, and nurturing converging industries. Furthermore, we champion balanced territorial development, reducing the divide between cities, farmlands, and fishing communities. Our strategy supports a variety of activities designed to foster coexistence and exchange.

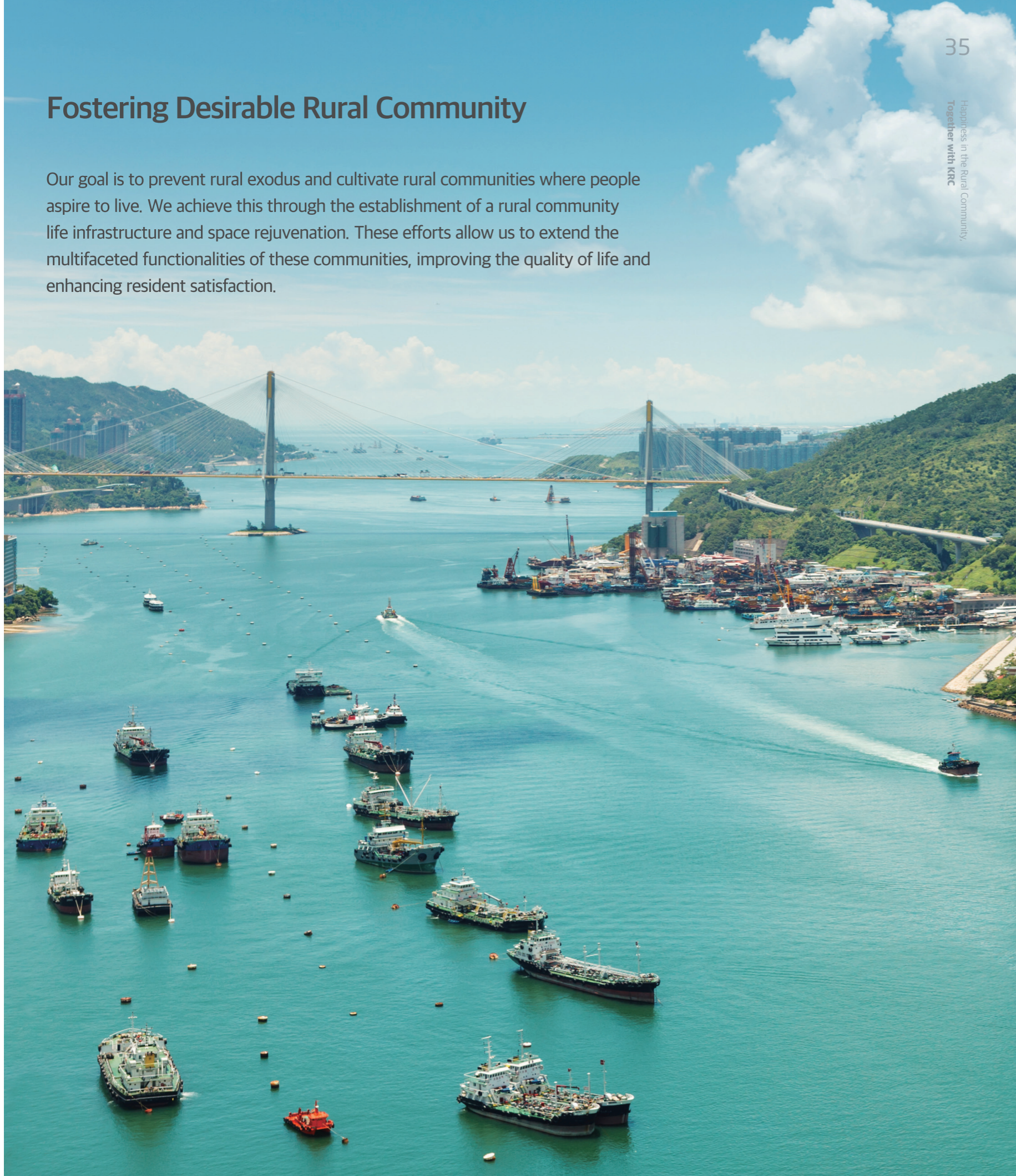


## Fostering Desirable Rural Community

Our goal is to prevent rural exodus and cultivate rural communities where people aspire to live. We achieve this through the establishment of a rural community life infrastructure and space rejuvenation. These efforts allow us to extend the multifaceted functionalities of these communities, improving the quality of life and enhancing resident satisfaction.

35

Happiness in the Rural Community,  
Together with KRC



### Preserving Rural Authenticity and Enhancing Quality of Life with Rural SOC

- We are transforming rural spaces into hubs for living, working, and resting while establishing and maintaining essential SOC.
- We're driving long-term, comprehensive rural regeneration projects that restore the character of rural areas and contribute to national development.
- We're restructuring rural residential zones and developing integrated SOC facilities for enhanced living.

### Boosting the Vitality of Fishing Communities through Expanded SOC

- We're digitizing the fisheries sector by disseminating eco-friendly and smart aquaculture production technologies.
- We're restoring aquatic ecosystems through the improvement of fishing grounds, establishing eco-friendly inland aquaculture complexes, and fostering the creation and growth of smart aquaculture clusters with comprehensive facilities for production, processing, and distribution.
- Adapting to the evolving tourism paradigm of rest and healing, we're invigorating local economies by creating marine therapeutic spaces centered on the fishing village experience.
- We're establishing SOC within fishing communities.

Revitalization of marine tourism in the fishing community and ports

Creation of a regenerative and innovative fishing community

Economic and living platforms, and safety infrastructure support



Constructing innovative spaces to bolster the sustainability and vitality of the fishing communities, ensuring they continue to thrive for generations to come.





## Rejuvenating Local Communities

We are committed to enhancing the public welfare services in rural communities through tailored support policies. These policies aim to fortify the competitiveness of social economy organizations and expand rural transportation models for improved connectivity.



## Pioneering Economic Advancement in Rural Communities

We leverage both the tangible and intangible assets of rural communities, providing comprehensive support for the development and expansion of local services, products, tourism, and eco-initiatives. Our strategy focuses on stimulating economic growth by promoting and fostering the tourism industry within these communities.

### Establishing an All-Inclusive Support Framework for the Development of Convergence Industries

- Our commitment to fostering competitive rural community convergence industries is realized through a comprehensive support system that encompasses: Systematic management, which includes the operation of a certification system, offering market support, providing HACCP certification consulting, and building a sustainable rural convergence industry ecosystem.

### Boosting Rural Household Income through Rural Tourism Vitalization

- **Content development:** We design and disseminate consumer-tailored programs and rural travel products inspired by Korean culture.
- **Safety and evaluation:** We offer personalized consulting for rural community tourism, conduct evaluations of tourism facility ratings, and carry out safety and quarantine inspections.
- **Marketing and PR:** We operate a rural tourism advocacy program, which effectively communicates our initiatives through social media and other promotional outlets.



### Strengthening Policy Projects for Rural Community Vitality

- Providing support to stabilize management, enhance capabilities for policy development, and ensure the sustained activities of social economy organizations.
- Operating customized taxis and bus services, based on beneficiary-focused routes, and improving the settlement system in regions with inadequate transportation.
- Facilitating connections between individuals, institutions, and companies to enable them to share their diverse talents. Through such collaborations, we seek to build an interconnected rural community with shared goals and collective growth.



ENVIRONMENT



**E.C.O. Strategy** leading to carbon neutrality

**E** ENERGY  
Green energy

**C** CARBON ZERO  
Carbon reduction

**O** OPERATION  
Green ecosystem

SOCIAL



**H.U.G. Strategy** to embrace rural community

**H** HOPE  
Hope making

**U** UPGRADE  
Boost vitality

**G** GUARD  
Safety guard

GOVERNANCE



**N.E.T Strategy** to create empathy management together

**N** NETWORKING  
Participation

**E** ETHICS  
Integrity

**T** TRANSPARENCY  
Transparency



OUR STRATEGIC FOCUS

## Driving Sustainable ESG Management

As the Korea Rural Community Corporation, our vision for 2030 is to imbue love and green value into our rural communities. We are anchored in an earnest pledge to safeguard and nurture nature and the environment, committing to work in harmony with people at every level. To catalyze our promise into action, we've established the ESG Management Innovation Committee. This dedicated committee forms the nexus of our sustainability strategy, vigilantly monitoring our progress, conducting rigorous performance audits, and refining our strategic course to maximize the efficacy of our sustainable management efforts.

At the forefront of ESG advocacy within the agricultural and fisheries sectors, our initiatives are designed with a threefold objective: to cultivate a pristine environment, to promote a compassionate society, and to evolve into a truly people-centric organization.

We believe in the power of unity and mutual growth, fostering harmonious alliances with our stakeholders. Through this, we reaffirm our unyielding commitment to facilitating a sustainable future, reflected in every facet of our operations.



## E.C.O. Strategy: Pioneering Carbon Neutrality

Our top priority is realizing carbon neutrality in rural communities.  
We aim to transform these communities into low-carbon, eco-friendly spaces.



### ENERGY

**Achieving carbon neutrality in rural communities through the development of green energy**

- Launching agricultural greenhouse gas (GHG) reduction projects, including the improvement of paddy water management methods.
- Expanding renewable energy projects and fostering energy-independent communities via the development of the Saemangeum Smart Green Industrial Complex and community power plant constructions.



### CARBON ZERO

**Working towards a NET ZERO future for rural communities in response to climate change**

- Enhancing disaster response capabilities through the introduction of a climate environmental impact assessment system and the development of digital water pollution prevention and ICT-based water supply systems.

### OPERATION

**Building a green ecosystem through eco-friendly campaigns**

- Advocating for eco-friendly practices such as green mobility and recycling eco-friendly fertilizers.
- Boosting ecological restoration projects like the KRC Bee Return Campaign, Eco-River Connection Project, and Reservoir Algal Bloom Control Project.
- Ensuring the supply of clean water through real-time water quality monitoring and spring water preservation activities.





## H.U.G. Strategy: Embracing Rural Community

For a future that grows through win-win and cooperation, we create rural communities with happy lives through inclusive ESG practices such as shared growth, regional development, safety management, and talent development.



### HOPE

#### Establishing an ecosystem of inclusive and shared growth for thriving rural communities

- Nurturing local youth and convergence industries to generate added value and stimulate the local economy.
- Enhancing employment opportunities for the disabled and vulnerable.
- Providing ESG-customized consulting support for suppliers, promoting shared growth with small and medium-sized enterprises (SMEs).



### UPGRADE

#### Boosting vitality in rural and fishing communities through coexistence

- Ensuring quality rural living through improved social infrastructure, such as rural transportation models.
- Building a social safety net by fostering regional cooperation and talent sharing.
- Improving living conditions through space restructuring projects and customized service support in rural communities.
- Addressing welfare blind spots by establishing BF-certified facilities for an obstacle-free living environment.



### GUARD

#### Acting as a safety guardian in preparation for disasters

- Strengthening safety response management and promoting a safety-oriented culture through the establishment of smart disaster preparation systems, preventive programs for major disasters, and an on-site management support center.

## N.E.T. Strategy: Collaborative Empathy Management

Our goal is to foster integrity and ethical management through the establishment of transparent management systems and communication channels. We are committed to sustainability as a company trusted by the public.



### NETWORKING

#### Enhancing Public Communication

- Strengthening communication channel functions through data transparency, disclosure of professional technology, and engagement with farmer and fishermen groups.
- Advocating for consumer-centered regulatory improvements by holding the Private Participation Type Regulatory Verification Committee and activating the Corporation Growth Response Center.
- Deepening our communication with stakeholders through the publication of a sustainability report, outlining our activities and accomplishments in the environmental, social, and governance sectors.



### ETHICS / TRANSPARENCY

#### Upholding Integrity and Ethical Management

- Establishing an integrity system to bolster fairness, promoting a healthy organizational culture through activities by excellent innovation learning teams and adherence to the KRC-way's 3 fundamental principles and 8 organizational culture guidelines.
- Implementing a sustainable ethical management system that reflects the ethical management standard model, such as fostering ethical awareness, setting up a management system, and identifying ethical risks.





# Major Project Information System

Rural Water  
Comprehensive Information System  
[rims.ekr.or.kr](http://rims.ekr.or.kr)



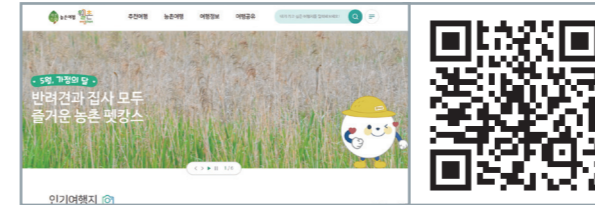
Our system facilitates integrated management of rural water information, offering a comprehensive overview of crucial elements such as agricultural production infrastructure, disaster management, and water resources.

Integrated Farmland Bank Portal  
[www.fbo.or.kr](http://www.fbo.or.kr)



Our portal serves as a one-stop solution for a range of farmland bank services, from farmland acquisition to pension consultations and applications.

Welchon:  
Rural Tourism Information Portal  
[www.welchon.com](http://www.welchon.com)



Welchon serves as your gateway to rural tourism, offering travel information about rural communities, from excellent travel destinations to dining experiences.

Rural Community Notification System  
[www.alimi.or.kr](http://www.alimi.or.kr)



This comprehensive platform brings together diverse information related to rural communities, such as water facilities, agriculture knowledge, and initiatives to return to rural communities.

Groundwater Management System for  
Rural Community  
[www.groundwater.or.kr](http://www.groundwater.or.kr)



Our specialized system effectively manages agricultural groundwater information, providing insights into groundwater quantity, quality, and usage patterns.

Farmland Space Portal  
[njy.mafra.go.kr](http://njy.mafra.go.kr)



This portal offers a cohesive view of national spatial information, including farmland administrative data, aerial imagery, and cadastral maps.

Smile Talent Bank:  
Rural Talent-Sharing Platform  
[www.smilebank.kr](http://www.smilebank.kr)



Our platform connects talent providers with rural communities, fostering a support system that promotes sharing and community growth.

Saemangeum National Industrial  
Complex Information Hub  
[www.smgic.kr](http://www.smgic.kr)



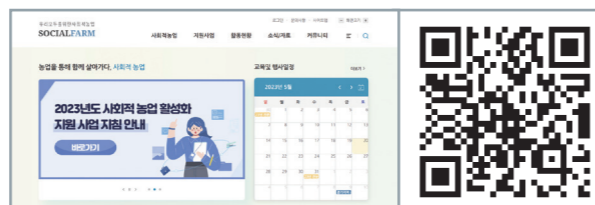
Our hub provides detailed information about the Saemangeum National Industrial Complex development project, a pivotal initiative aimed at fostering knowledge creation and environmentally friendly industries.

Research Institute for Rural Community  
[ri.ekr.or.kr](http://ri.ekr.or.kr)



Our institute supports the future of agriculture and fisheries in rural areas and fishing communities by providing access to crucial research, inspections, and achievements in environmental, energy, and regional economic research.

Social Farming Platform  
[www.socialfarm.kr](http://www.socialfarm.kr)



We provide critical social services through agricultural activities, catering to the needs of socially underprivileged groups like the elderly and disabled, by offering care, education, and employment opportunities.

## Korea Rural Community Corporation

- Blog** [blog.naver.com/krcpolicy](http://blog.naver.com/krcpolicy)
- Youtube** [www.youtube.com/@krcpolicy](http://www.youtube.com/@krcpolicy)
- Instagram** [www.instagram.com/krcpolicy](http://www.instagram.com/krcpolicy)
- Facebook** [www.facebook.com/krcno1](http://www.facebook.com/krcno1)



Blog



YouTube



Instagram



Facebook



# Head Office, 3 institutes, Regional Headquarters, Project Offices

## Head Office

20 Green-ro, Naju-si, Jeollanam-do  
☎ 82-61-338-5114

## 3 institutes

**1 Rural Research Institute**  
870 Haean-ro, Sangnok-gu, Ansan-si, Gyeonggi-do  
☎ 82-31-400-1700

**2 Human Resources Development Institute**  
870 Haean-ro, Sangnok-gu, Ansan-si, Gyeonggi-do  
☎ 82-31-420-0700

**3 Rural Community Resources Development Institute**  
22, Burim-ro 169beon-gil, Dongan-gu, Anyang-si, Gyeonggi-do  
☎ 82-31-8084-9503

## Regional Headquarter, KRC

**1 Gyeonggi Regional Headquarter, KRC**  
347, Jangan-ro, Jangan-gu, Suwon-si, Gyeonggi-do  
☎ 82-31-250-3000

**2 Gangwon Regional Headquarter, KRC**  
18, Sau 4-gil, Chuncheon-si, Gangwon-do  
☎ 82-33-240-9600

**3 Chungbuk Regional Headquarter, KRC**  
1053, 1sunhwan-ro, Seowon-gu, Cheongju-si, Chungcheongbuk-do  
☎ 82-43-290-3300

**4 Chungnam Regional Headquarter, KRC**  
27, Daedeok-daero 290beon-gil, Seo-gu, Daejeon  
☎ 82-42-483-4600

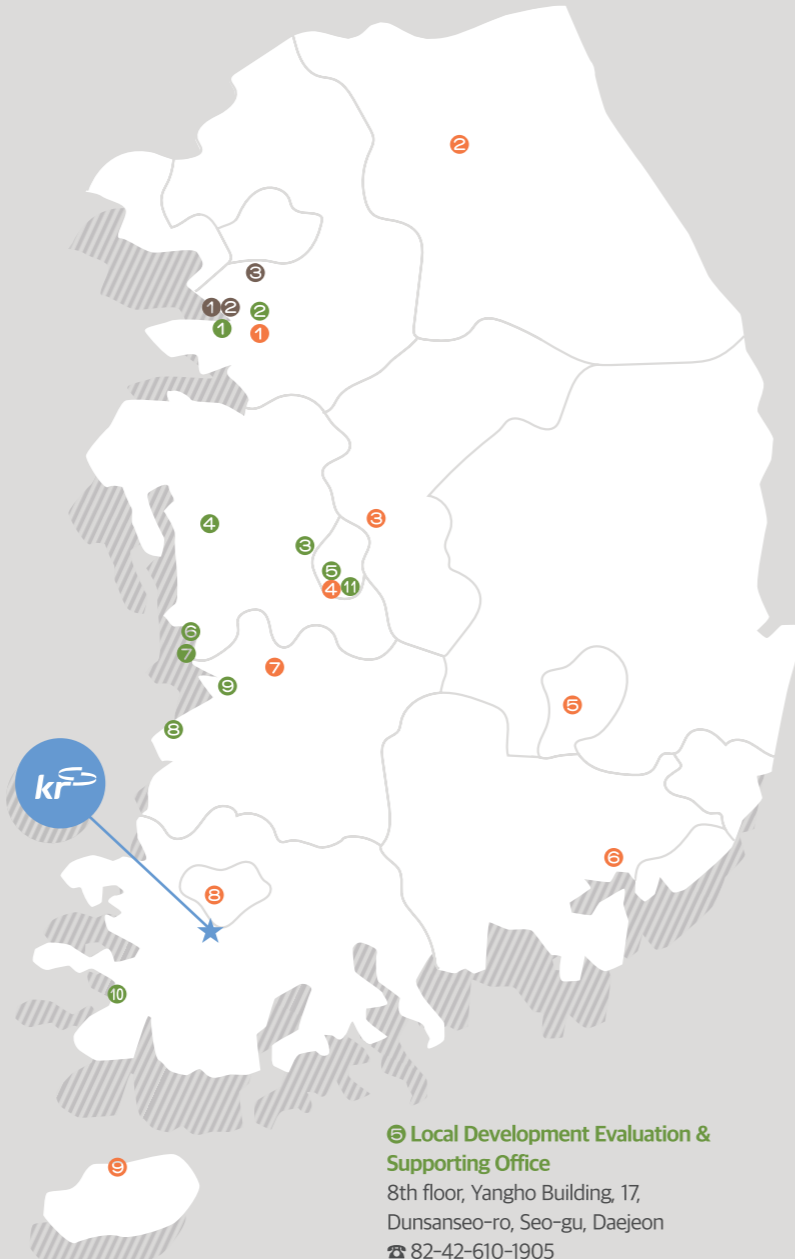
**5 Gyeongbuk Regional Headquarter, KRC**  
158, Guam-ro, Buk-gu, Daegu  
☎ 82-53-320-0700

**6 Gyeongnam Regional Headquarter, KRC**  
260(8-3 Yongho-dong), Yongji-ro, Seongsan-gu, Changwon-si, Gyeongsangnam-do  
☎ 82-55-269-9300

**7 Jeonbuk Regional Headquarter, KRC**  
137, Seowon-ro, Wansan-gu, Jeonju-si, Jeollabuk-do  
☎ 82-63-239-2000

**8 Jeonnam Regional Headquarter, KRC**  
225, Mujin-daero, Gwangsan-gu, Gwangju  
☎ 82-62-958-2305

**9 Jeju Regional Headquarter, KRC**  
12, Seonsa-ro, Jeju-si, Jeju-do  
☎ 82-64-750-8870



## Project Office, KRC

**1 Hwaan Project Office, KRC**  
17, Jeokgeum-ro 1-gil, Danwon-gu, Ansan-si, Gyeonggi-do  
☎ 82-31-412-1400

**2 Land Development Project Office, KRC**  
91, Suin-ro, Gwonseon-gu, Suwon-si, Gyeonggi-do  
☎ 82-31-299-7808

**3 Integrated Water Resources Management Department**  
#618, 194, Jeoljae-ro, Sejong City (Eojin-dong, Sejong Central Town)  
☎ 82-44-864-6824

**4 Cheonsuman Project Office, KRC**  
58, Wolsan-ro, Hongseong-eup, Hongseong-gun, Chungcheongnam-do  
☎ 82-41-630-5900

**5 Local Development Evaluation & Supporting Office**  
8th floor, Yangho Building, 17, Dunsanse-ro, Seo-gu, Daejeon  
☎ 82-42-610-1905

**6 Geumgang Project Office, KRC**  
45, Cheolsae-ro, Seongsan-myeon, Gunsan-si, Jeollabuk-do  
☎ 82-63-450-9999

**7 Saemangeum Industrial Complex Project Office, KRC**  
5th floor, Envy Building, 24-9, Gungpo 1-ro, Gunsan-si, Jeollabuk-do  
☎ 82-63-450-9000

**8 Saemangeum Public Relations Hall**  
6, Saemangeum-ro, Byeonsan-myeon, Buan-gun, Jeollabuk-do  
☎ 82-63-584-6822

**9 Saemangeum Project Office, KRC**  
71, Dojak-ro, Gimje-si, Jeollabuk-do  
☎ 82-63-540-5800

**10 Youngsangang Project Office, KRC**  
463, Yeongsan-ro, Mokpo-si, Jeollanam-do  
☎ 82-61-270-6454

**11 Safety Inspection Headquarter, KRC**  
5, Munye-ro, Seo-gu, Daejeon  
☎ 82-42-479-8214

# District Office, KRC(93)

| By department                 | Phone call     | Address  |
|-------------------------------|----------------|--|
| <b>Gyeonggi-do(10)</b>        |                |  |
| Yeouju-Icheon                 | 82-31-887-7500 | 816, Yanghwa-ro, Sejongdaewang-myeon, Yeouju-si                      |
| Yangpyeong-Gwangju-Seoul      | 82-31-770-8000 | 90-8, Yangpyeongdaegyo-gil, Gangsang-myeon, Yangpyeong-gun           |
| Hwaseong-Suwon                | 82-31-240-4800 | 38-2, Imok-ro 74beon-gil, Jangan-gu, Suwon-si                        |
| Yeoncheon-Pocheon-Gapyeong    | 82-31-860-8900 | 91, Jeongok-ro, Jeongok-eup, Yeoncheon-gun                           |
| Paju                          | 82-31-950-3200 | 240, Jungang-ro, Paju-si   |
| Goyang                        | 82-31-929-9400 | 14, Gajwa-ro 50beon-gil, Ilsanseo-gu, Goyang-si                      |
| Ganghwa-Ongjin                | 82-32-930-2500 | 20, Ganghwa-daero 215beon-gil, Ganghwa-eup, Ganghwa-gun, Incheon     |
| Gimpo                         | 82-31-980-8100 | 11-1, Dolmun-ro, Gimpo-si  |
| Pyeongtaek                    | 82-31-681-2181 | 63, Gangbyeon-ro, Anjung-eup, Pyeongtaek-si                          |
| Anseong                       | 82-31-673-9771 | 5, Silwang-gil, Anseong-si   |
| <b>Gangwon-do(5)</b>          |                |  |
| Hongcheon-Chuncheon           | 82-33-430-9500 | 671, Hongcheon-ro, Hongcheon-eup, Hongcheon-gun                      |
| Wonju                         | 82-33-749-1600 | 9, Munmak Market 1-gil, Munmak-eup, Wonju-si                         |
| Gangneung                     | 82-33-650-3200 | 63, Bonghwa-gil, Sacheon-myeon, Gangneung-si                         |
| Yeongbuk                      | 82-33-630-0121 | 163-4, Seoraksan-ro 4beon-gil, Sokcho-si                             |
| Cheorwon                      | 82-33-450-1300 | 21, Geumhak-ro 74beon-gil, Dongsong-eup, Cheorwon-gun                |
| <b>Chungcheongbuk-do(7)</b>   |                |  |
| Cheongju                      | 82-43-290-0500 | 50, Jungheung-ro, Sangdang-gu, Cheongju-si                           |
| Boeun                         | 82-43-540-2500 | 45, Gyeosamsan-gil, Boeun-eup, Boeun-gun                             |
| Okcheon-Yeongdong             | 82-43-730-2500 | 155, Jungang-ro, Okcheon-eup, Okcheon-gun                            |
| Eumseong                      | 82-43-871-7300 | 834, Eumseong-ro, Eumseong-eup, Eumseong-gun                         |
| Jincheon                      | 82-43-530-5700 | 38, Jungangbuk-ro, Jincheon-eup, Jincheon-gun                        |
| Goesan-Jeungpyeong            | 82-43-830-5100 | 39, Eupnae-ro, Goesan-eup, Goesan-gun                                |
| Chungju-Jecheon-Danyang       | 82-43-841-3000 | 45, Mokhaengsandan 7-ro, Chungju-si                                  |
| <b>Chungcheongnam-do(13)</b>  |                |  |
| Gongju                        | 82-41-850-6400 | 17-53 Gongjudaeahak-ro, Gongju-si                                    |
| Sejong-Daejeon-Geumsan        | 82-44-860-3333 | 2119, Sejong-ro, Yeonseo-myeon, Sejong City                          |
| Boryeong                      | 82-41-930-7800 | 94-19, Jukseong-ro, Boryeong-si                                      |
| Asan                          | 82-41-539-7000 | 6th floor, Smart Tower, 442, Yisunsin-daero, Tangeong-myeon, Asan-si |
| Cheonan                       | 82-41-556-8064 | 19, Wonseong 1-gil, Dongnam-gu, Cheonan-si                           |
| Seosan-Taeon                  | 82-41-660-8500 | 7, Museok 3-ro, Seosan-si  |
| Nonsan                        | 82-41-730-2114 | 152(Uisan-dong), Gwanchok-ro, Nonsan-si                              |
| Buyeo                         | 82-41-837-9512 | 90, Seongwang-ro, Buyeo-eup, Buyeo-gun                               |
| Seocheon                      | 82-41-950-7700 | 29-19, Hwageumseong-gil, Seocheon-eup, Seocheon-gun                  |
| Cheongyang                    | 82-41-940-1700 | 1, Wolchon-gil, Cheongyang-eup, Cheongyang-gun                       |
| Hongseong                     | 82-41-630-5700 | 58, Wolsan-ro, Hongseong-eup, Hongseong-gun                          |
| Yesan                         | 82-41-330-3500 | 20, Jugyo-ro, Yesan-eup, Yesan-gun                                   |
| Dangjin                       | 82-41-351-9114 | 2-22, Bamjeol-ro, Dangjin-si   |
| <b>Jeollabuk-do(10)</b>       |                |  |
| Namwon                        | 82-63-620-2000 | 25, Nongo-gil, Namwon-si   |
| Sunchang                      | 82-63-650-7000 | 13, Gwangam-ro, Sunchang-eup, Sunchang-gun                           |
| Dongjin                       | 82-63-540-1114 | 112, Hwadong-gil, Gimje-si   |
| Buan                          | 82-63-580-1000 | 211, Beonyeong-ro, Buan-eup, Buan-gun                                |
| Gunsan                        | 82-63-440-5600 | 272-6, Oksan-ro, Oksan-myeon, Gunsan-si                              |
| Iksan                         | 82-63-860-0013 | 1794, Iksan-daero, Hamyeol-eup, Iksan-si                             |
| Jeonju-Wanju-Imsil            | 82-63-270-0500 | 740, Baekje-daero, Deokjin-gu, Jeonju-si                             |
| Gochang                       | 82-63-560-1504 | 1636-8, Goidol-daero, Gochang-eup, Gochang-gun                       |
| Jeongeup                      | 82-63-530-0300 | 24, Beotkot-ro, Jeongeup-si  |
| Mujinjang (Muju-Jinan-Jangsu) | 82-63-350-7000 | 135, Songcheon-ro, Jangsu-eup, Jangsu-gun                            |

| By department               | Phone call     | Address   |
|-----------------------------|----------------|---|
| <b>Jeollanam-do(18)</b>     |                |   |
| Gwangju                     | 82-62-380-8600 | 6(Yeongsang Building), Sangmu-daero 956beon-gil, Seo-gu, Gwangju      |
| Suncheon-Gwangyang-Yeosu    | 82-61-740-1114 | 33, Jorye 2-gil, Suncheon-si  |
| Naju                        | 82-61-330-9500 | 2418, Yeongna-ro, Naju-si   |
| Damyang                     | 82-61-381-2122 | 12-27, Samgeori-gil, Damyang-eup, Damyang-gun                         |
| Gokseong                    | 82-61-360-1100 | 165, Hakgyo-ro, Gokseong-eup, Gokseong-gun                            |
| Gurye                       | 82-61-780-3120 | 35, 5-ilsjangkeun-gil, Gurye-eup, Gurye-gun                           |
| Goheung                     | 82-61-830-2200 | 1551, Goheung-ro, Goheung-eup, Goheung-gun                            |
| Boseong                     | 82-61-850-2500 | 183, Bonghwa-ro, Boseong-eup, Boseong-gun                             |
| Hwasun                      | 82-61-370-8500 | 2000, Hakpo-ro, Neungju-myeon, Hwasun-gun                             |
| Jangheung                   | 82-61-860-7600 | 107, Nambu-gwangwang-ro, Jangheung-eup, Jangheung-gun                 |
| Gangjin                     | 82-61-430-7725 | 24, Choji-gil, Gangjin-eup, Gangjin-gun                               |
| Haenam-Wando                | 82-61-530-1500 | 7, Haeri 1-gil, Haenam-eup, Haenam-gun                                |
| Yeongam                     | 82-61-470-5515 | 59, Gyodong-ro, Yeongam-eup, Yeongam-gun                              |
| Mokpo-Muan-Shinan           | 82-61-260-5500 | 4th floor, 114, Hugwang-daero, Mokpo-si                               |
| Hampyeong                   | 82-61-320-5200 | 29-10 Gisan-gil, Hampyeong-eup, Hampyeong-gun                         |
| Yeonggwang                  | 82-61-350-6500 | 100-14 Sinnam-ro, Yeonggwang-eup, Yeonggwang-gun                      |
| Jangseong                   | 82-61-390-8600 | 572-7 Gangbyeon-ro, Jangseong-eup, Jangseong-gun                      |
| Jindo                       | 82-61-540-5400 | 44, Namsan 2-gil, Jindo-eup, Jindo-gun                                |
| <b>Gyeongsangbuk-do(17)</b> |                |   |
| Pohang-Ulleung              | 82-54-261-0602 | 42, Handong-ro, Heunghae-eup, Buk-gu, Pohang-si                       |
| Gyeongju                    | 82-54-772-3841 | 181, Wonhyo-ro, Gyeongju-si   |
| Andong                      | 82-54-850-5711 | 5th and 6th floors, Songhyeon Building, 323, Gyeongdong-ro, Andong-si |
| Gumi-Gimcheon               | 82-54-712-3400 | 14, Deulseong-ro 13-gil, Goa-eup, Gumi-si                             |
| Yeongju-Bonghwa             | 82-54-639-5000 | 10, Guseong-ro 285beon-gil, Yeongju-si                                |
| Yeongcheon                  | 82-54-339-5000 | 39-7, Junam 1-gil, Yeongcheon-si                                      |
| Sangju                      | 82-54-531-3610 | 5, Bukcheon-ro, Sangju-si   |
| Mungyeong                   | 82-54-550-5300 | 42-4, Geumcheon-ro, Sanyang-myeon, Mungyeong-si                       |
| Gyeongsan-Cheongdo          | 82-53-819-6000 | 226, Gyeongan-ro, Gyeongsan-si  |
| Uiseong-Gunwi               | 82-54-830-8100 | 1776-46, Seobu-ro, Angye-myeon, Uiseong-gun                           |
| Cheongsong-Yeongyang        | 82-54-870-0500 | 167, Jinbo-ro, Jinbo-myeon, Cheongsong-gun                            |
| Yeongdeok-Uljin             | 82-54-730-5000 | 1786, Yeongdeok-ro, Yeonghae-myeon, Yeongdeok-gun                     |
| Goryeong                    | 82-54-950-0700 | 3, Gayageum-gil, Daegaya-eup, Goryeong-gun                            |
| Seongju                     | 82-54-930-0700 | 53, Seongju-eup 4-gil, Seongju-eup, Seongju-gun                       |
| Chilgok                     | 82-54-800-5000 | 99, Gwanmun-ro, Waegwan-eup, Chilgok-gun                              |
| Yecheon                     | 82-54-650-7100 | 570, Chunghyo-ro, Yecheon-eup, Yecheon-gun                            |
| Dalseong                    | 82-53-628-1123 | 266, Seongdang-ro, Nam-gu, Daegu                                      |
| <b>Gyeongsangnam-do(13)</b> |                |   |
| Gimhae-Yangsan-Busan        | 82-55-333-4851 | 12-1, Garak-ro 49beon-gil, Gimhae-si                                  |
| Goseong-Tongyeong-Geoje     | 82-55-670-7000 | 51, Giwol 2-gil, Goseong-eup, Goseong-gun                             |
| Ulsan                       | 82-52-290-5305 | 8-3, Guncheon 2-gil, Cheongnyang-eup, Ulsu-gu, Ulsan                  |
| Jinju-Sancheong             | 82-55-752-1631 | 96, Soho-ro, Jinju-si   |
| Uiryeong                    | 82-55-570-6060 | 5, Ulbyeong-ro 14-gil, Uiryeong-eup, Uiryeong-gun                     |
| Haman                       | 82-55-580-0300 | 591, Haman-daero, Gaya-eup, Haman-gun                                 |
| Changnyeong                 | 82-55-530-7777 | 43, Bongcheon-gil, Changnyeong-eup, Changnyeong-gun                   |
| Miryang                     | 82-55-354-3921 | 1920, Miryang-daero, Miryang-si                                       |
| Changwon                    | 82-55-291-4636 | 406-7, Jinsan-daero, Daesan-myeon, Uichang-gu, Changwon-si            |
| Hadong-Namhae               | 82-55-883-5112 | 12, Songrim 1-gil, Hadong-eup, Hadong-gun                             |
| Sacheon                     | 82-55-852-2706 | 1803, Sacheon-daero, Sacheon-eup, Sacheon-si                          |
| Geochang-Hamyang            | 82-55-940-5500 | 35, Sangdong-gil, Geochang-eup, Geochang-gun                          |
| Hapcheon                    | 82-55-933-7970 | 163, Dongseo-ro, Hapcheon-eup, Hapcheon-gun                           |



